

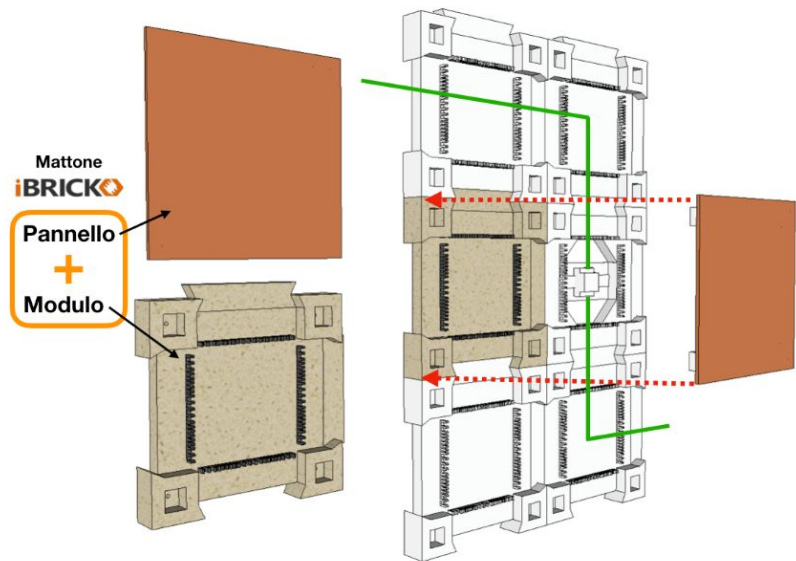
iBRICKO 
the smart way to build ibricko.com

What is iBRICKO

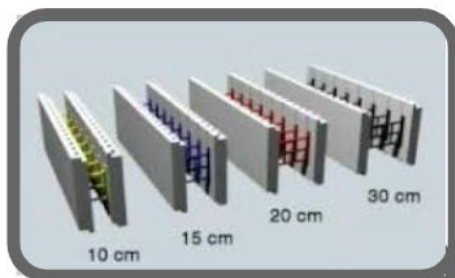
iBRICKO is a modular construction system with **modular blocks** that allows to quickly create surfaces (walls but also floors and ceilings) designed to accommodate technological systems and passive or active devices (IoT).

With **iBRICKO** you can quickly customize both the external appearance of the wall with special "skins" and the internal distribution by adding devices (sockets, switches, thermostats, etc.) by connecting them together easily using cables already headed with connectors.

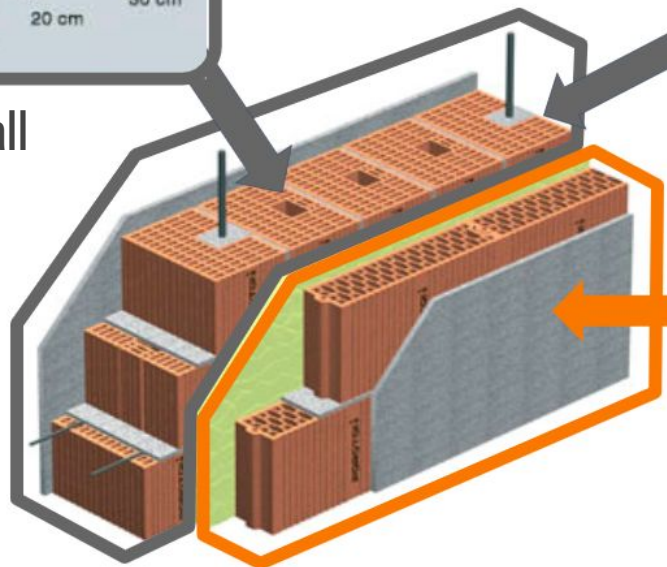
iBRICKO is a 100% Italian project covered by an **international patent**.



Where it can be used



structural wall



internal wall



Today...

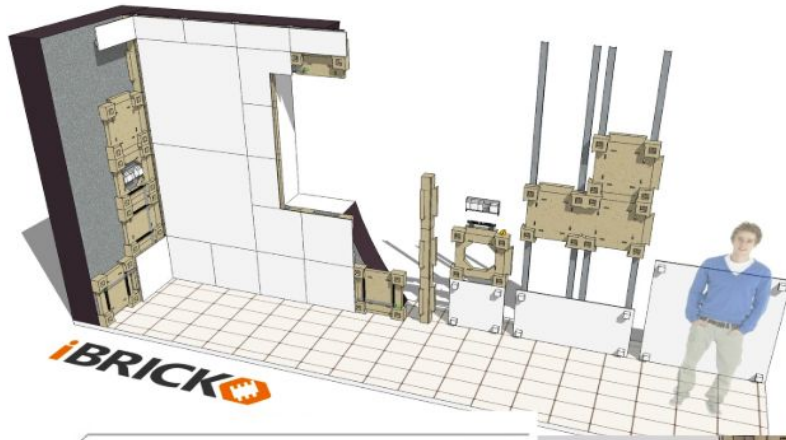
Drywall



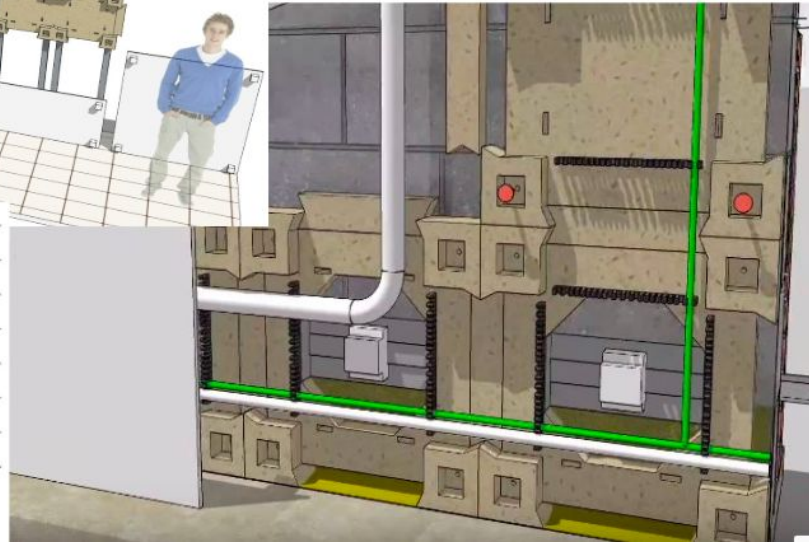
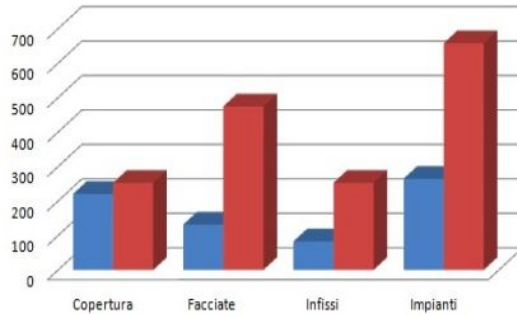
Hollow bricks



....Tomorrow



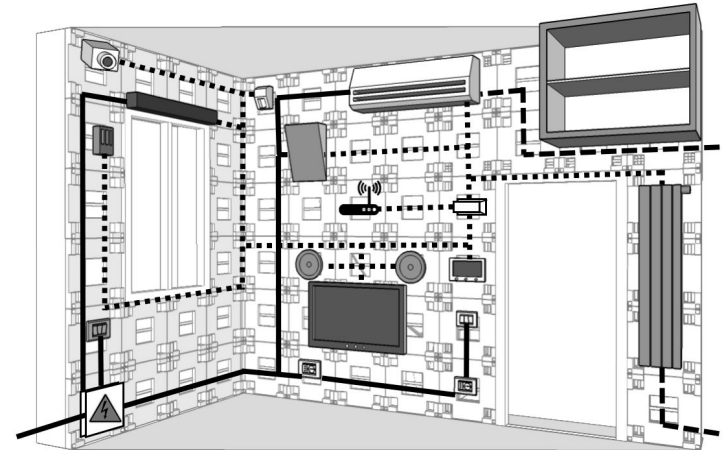
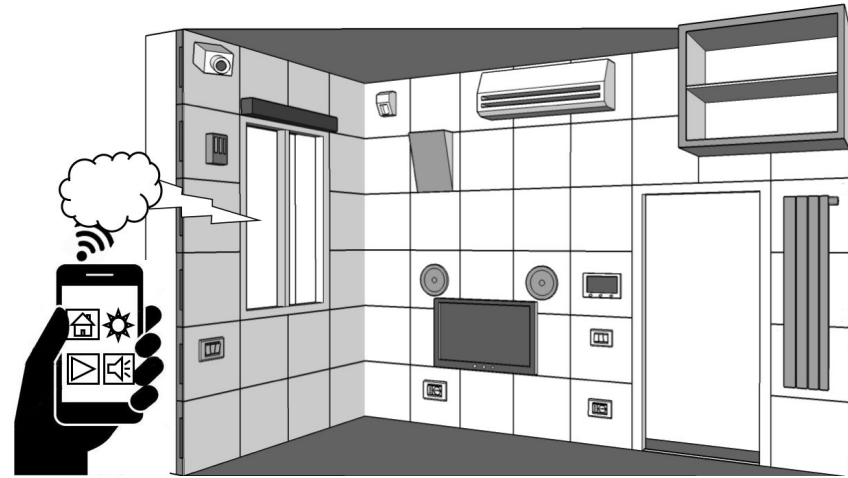
smart wall



What you can realize

With the **iBRICKO** system it is possible to create walls, partitions, modular furniture, office or shop cabins, open space for offices, temporary structures, stands ... and more. The advantage of a modular system like **iBRICKO** is to have extraordinary flexibility. In fact, just a few tools, no additional building material, glues, etc. ... and in addition it is a "clean" construction system!

Once the blocks have been positioned, they can accommodate all types of systems, allowing rapid laying of the entire distribution and rapid repositioning in the event of variations or changes to the functional distribution.

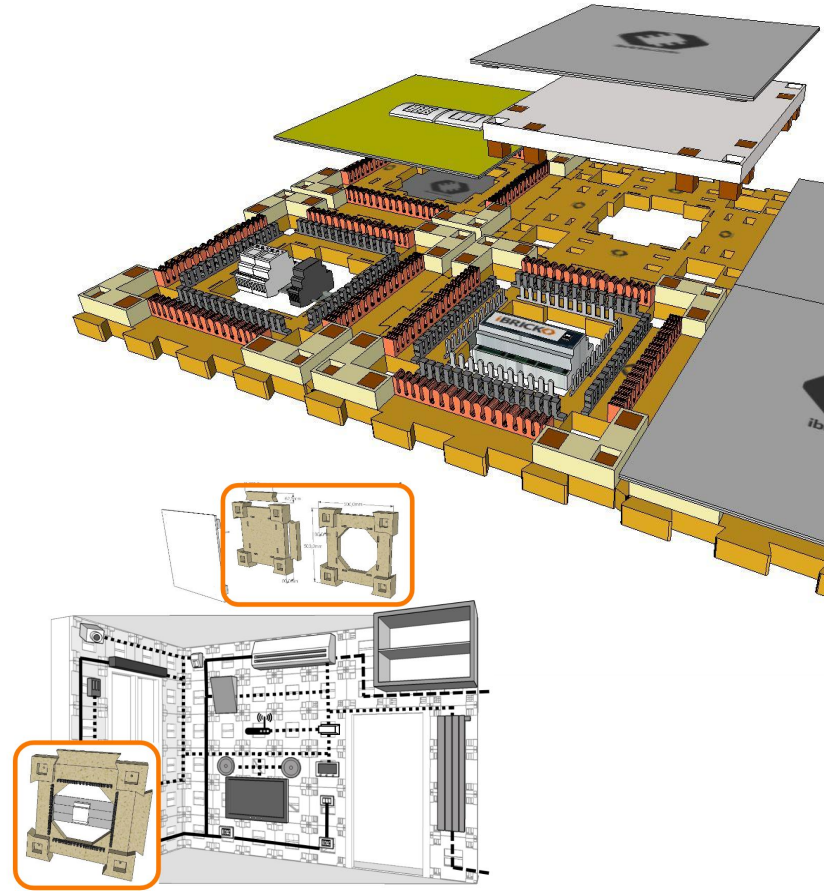


How to Install

1 - Mount the empty blocks according to the structure you need to create and **apply them to the rough walls** or to the supporting frame. Through the interlocking of the modules, it is possible to create the wall quickly and easily and to create all types of shapes and structures thanks to the special pieces and the shape of the base blocks.

2 - Install the devices you have chosen in the blocks. Where it is necessary, use the cables already headed with the connectors to connect them or connect them in the traditional way.

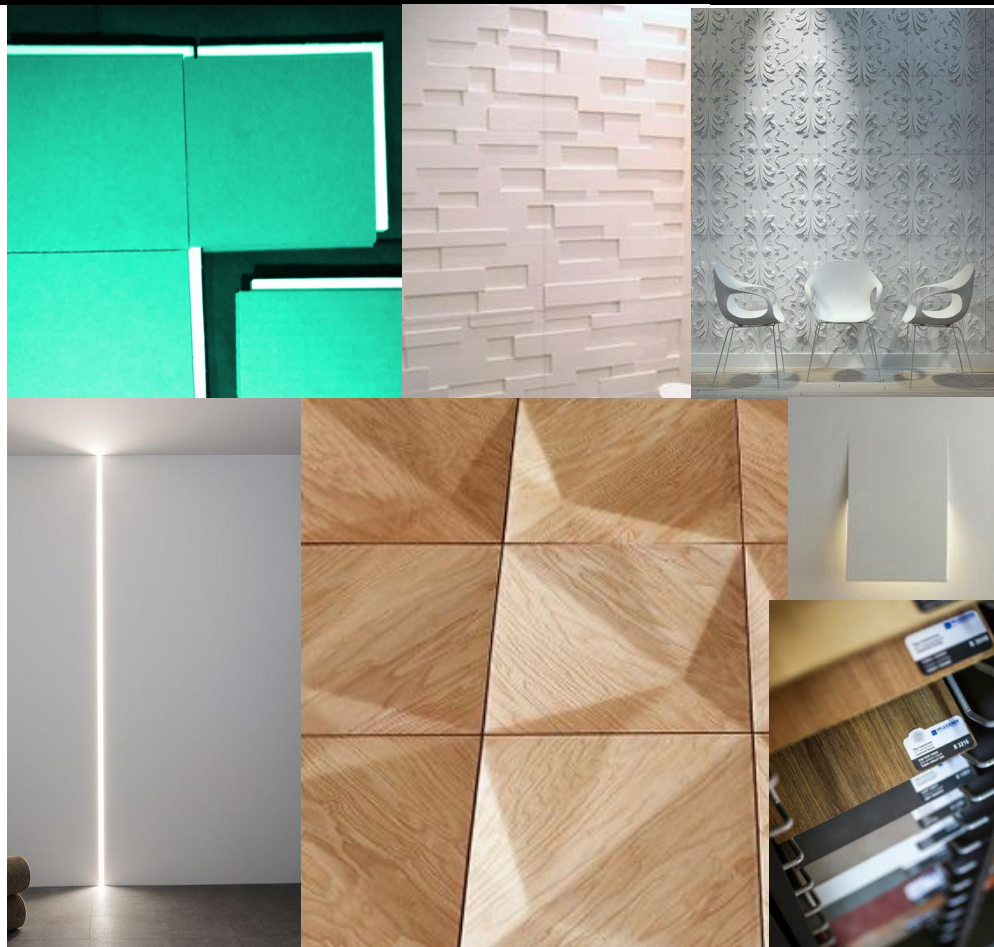
3 - Apply the panels (skin) with the finish in line with your style, easily and safely, with the ability to remove them, if necessary, to change the design of the room or to inspect and integrate the system.



External skin and Design

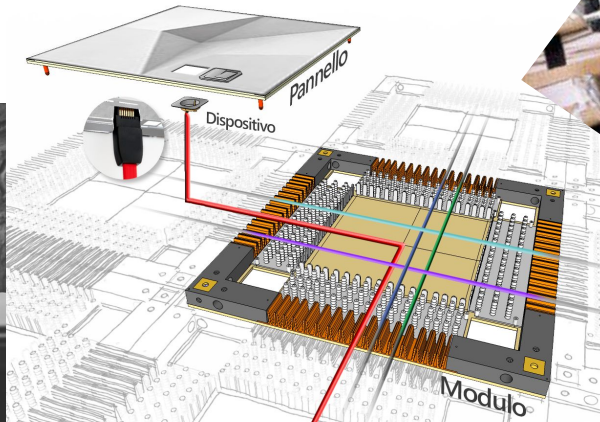
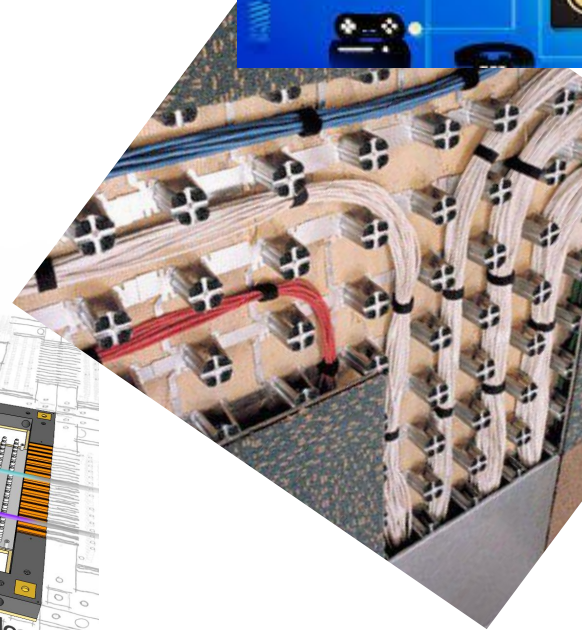
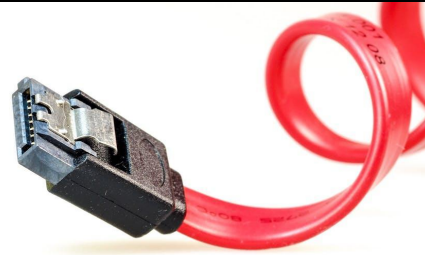
iBRICKO block is designed to create interior design systems even with a strong focus on design and materials. In fact, the module integrates the technological aspects with those of design, thanks to the external panels (skins) available with fine finishes and customizable both in form and in materials.

iBRICKO can of course be used in traditional plaster construction systems, using raw finish panels that can be finished with normal processing techniques.



Laying and linking speed

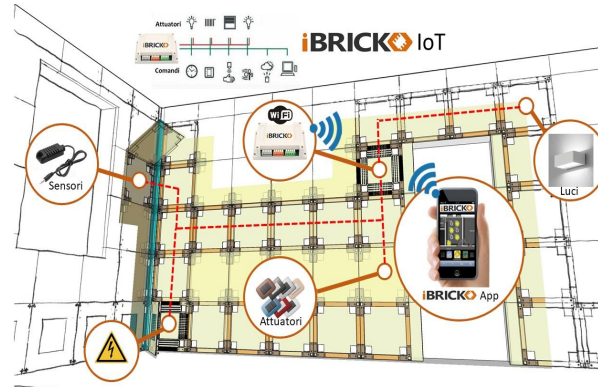
iBRICKO modules allow you to quickly create and with the ability to compose, as desired, the internal distribution of a building (electrical, LAN, water) with the logic of home automation programmability. The components can be exchanged, dismantled or replaced. The connections are easily made via connectors.



Use iBRICKO with the mobile devices

Once the internal walls have been built with the **iBRICKO** system, the wall can be managed intelligently and interactively.

The **iBRICKO** app will allow you to interact with the finished wall, giving both a **technical support** to get information on all the systems contained in it thanks to Augmented Reality, and **functional** through the ability to interact and control all the devices present in remote mode, using the smartphone as a remote control (IoT logics).



Sensors, machine learning and IFTTT

Through the analysis of the sensors (microphones, video cameras, thermostats, etc, etc) implemented in iBRICKO it is possible to create reactive and personalized scenarios on the people living in the home. The use of machine learning can significantly reduce the number of sensors and at the same time widen the possibilities of identifying the domotic scenario in use.

With the logic of the IFTTT (If This Then That) it is also possible to create applets and bots that allow the creation of simple chains of conditions.

Interfacing with voice assistants further expands the possibilities that the system provides.



Eco-Sustainability and comfort

The realization of **iBRICKO** panels takes place paying attention to the right balance between natural and environmentally friendly materials and technology.

For the materials used we paid particular attention to the reuse and use of natural fibers, which also guarantee high levels of comfort (acoustic and thermal).



Transportability and logistics



iBRICKO modules have been designed to be:

- stackable
- optimized for EUR2 europallets
- freely combinable
- modular
- shapable (jolly modules)
- customizable in design and structure
- modular (sale of empty modules)
- reusable

iBRICKO, why to finance it?

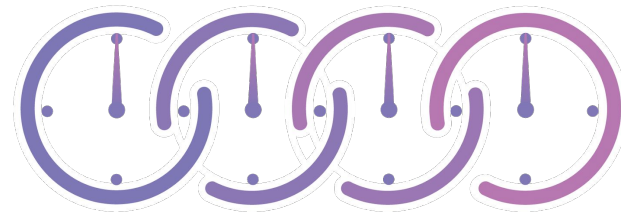
iBRICKO in addition to directly bringing value to those who work in the construction, furniture or plant design, because it creates a new product with an innovative patented construction system, is also interesting thanks to the patent from which it is covered.








Potential Market



Time table



- Idea & Design 
- Patent  We are in incubation phase at Lazio Innova
- R&D -> Develop prototype  3 months
- Small Production -> Case study prototype  6 months
- Industry production -> Market  12 months

What we need

- Business introduction
- Networking both in technological field and both in market field
- R&D support with University and Research Department, industrial partner
- Legal and logistic support



Our support

With the **iBRICKO** team, thanks to a series of high-level partners with whom we have developed the patent and which support us in the tax-related aspects of incentives, we are able to assess an economic pre-feasibility of the adoption of this mechanism to the internal of the **Partner Company**, in order to understand its real benefits and applicability.





for more information:

web site: www.ibricko.com

Informazioni: info@ibricko.com

ibricko.com



Gianluca Balzarini
CEO & Founder

+39 328 5938418
g.balzarini@ibricko.com



Andrea Balzarini
CTO & Founder

+39 338 9640057
a.balzarini@ibricko.com



Marco Cutini
COO & Founder

+39 371 3853395
m.cutini@ibricko.com