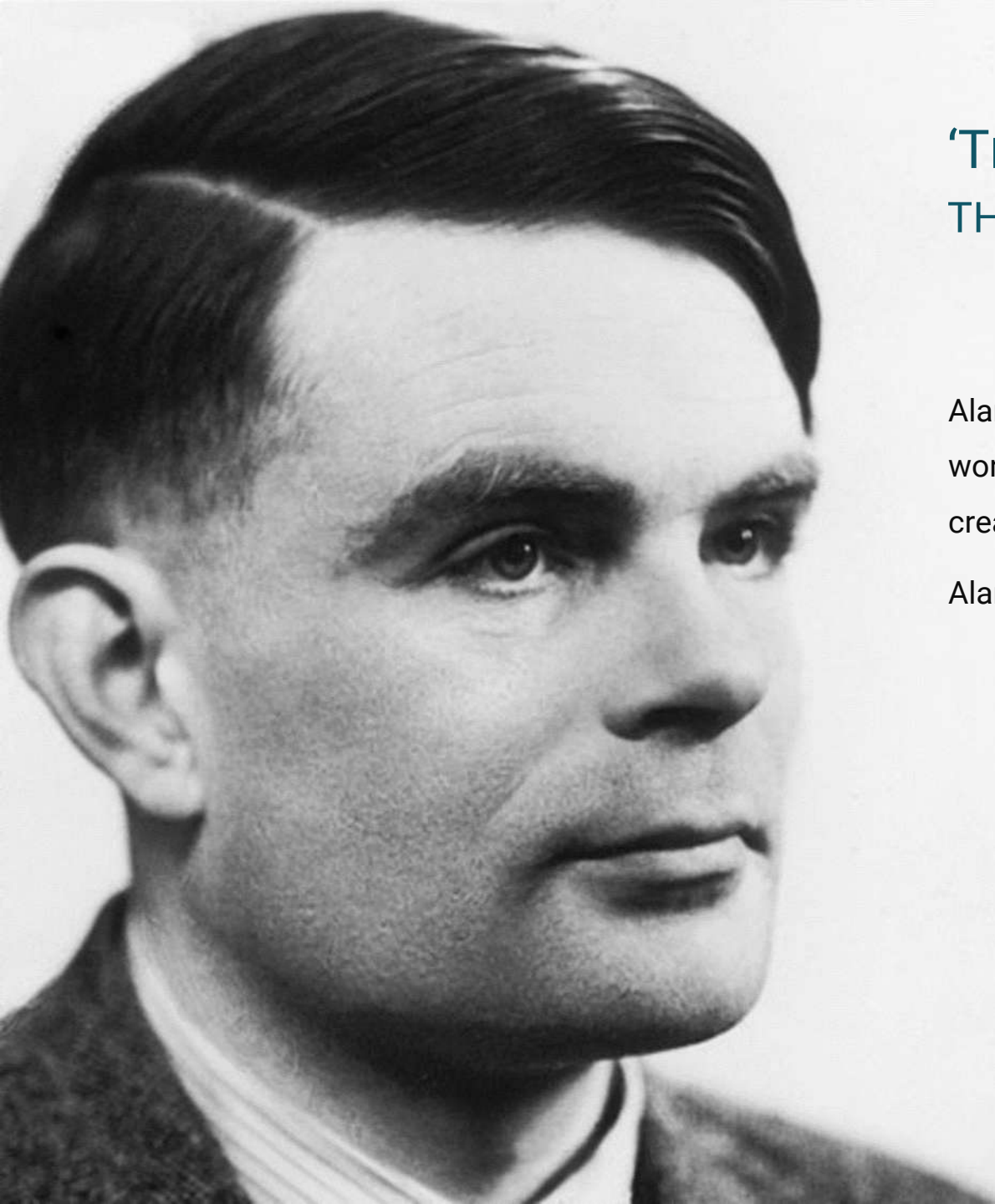




# Art and Artificial Intelligence When Humanities meet Science and Technology





**'THOSE WHO CAN IMAGINE ANYTHING, CAN CREATE  
THE IMPOSSIBLE'**

Alan Turing

Alan Turing is the father of computer science and artificial intelligence and his work pioneered research advances in mathematics, logics, cryptography, creating bridges between academia, industry and public sphere.

Alan Advantage is inspired by his work.



An automated decision system from The Twilight Zone's "Nick of Time" (1960)



**“The speed of analysis and decisions is no *longer* temporally tangible for humans: not only can they not calculate at the same speed as the machines, but above all they are unable to observe in real time what algorithms do.”**

Alexandre Laumonier



**Rethinking the design practice so that the development of new technological products and services is always accompanied by a *long-range thought*, able to glimpse the impact that each of these products will have on society.**

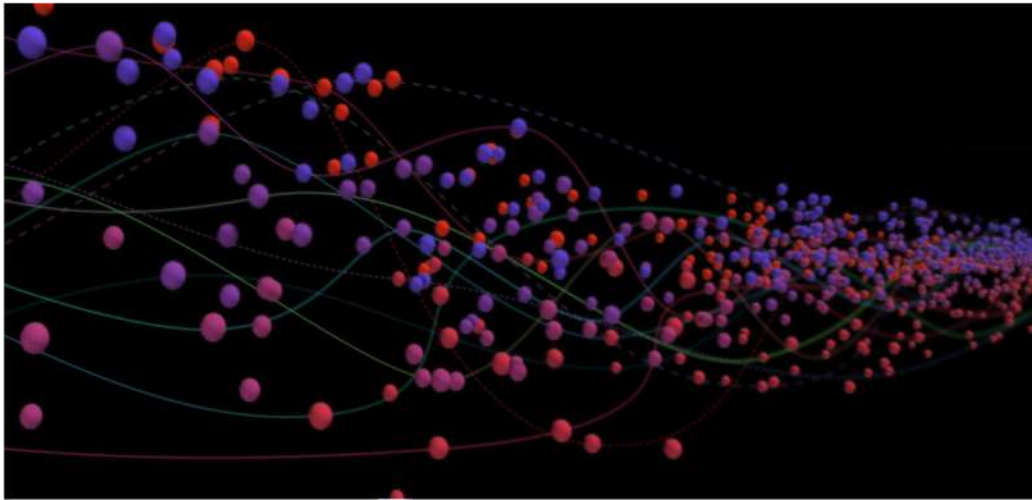


# WHAT MAKES US REALLY HUMANS?

REPETITION  
FAILURE  
EMPATHY  
ESTRANGEMENT  
LAZINESS  
FALL  
BOREDOM  
SLOWNESS



## CULTURAL ANALYTICS



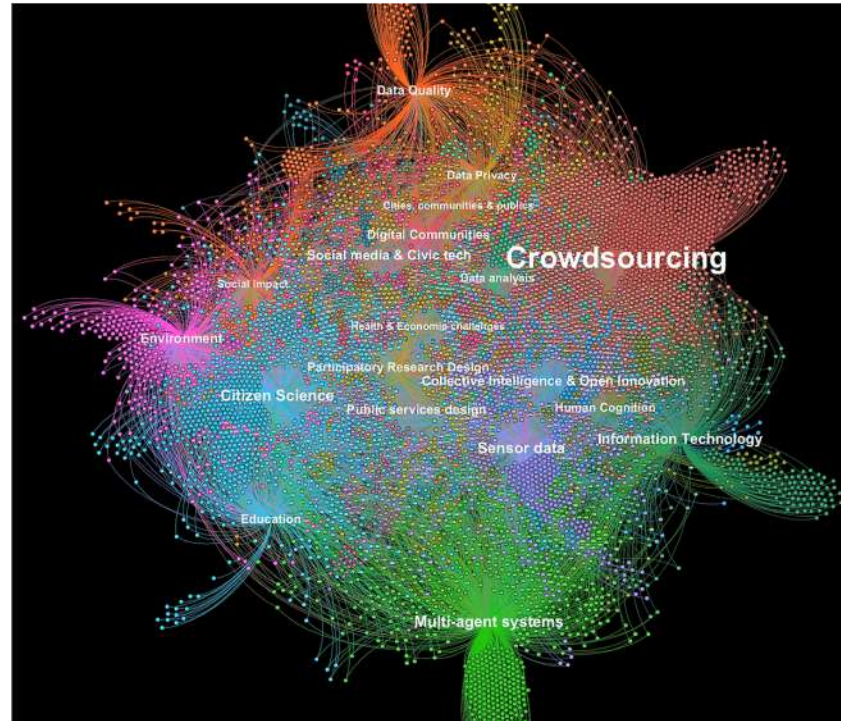
**Artificial Intelligence with its ability to process a huge amount of data coming from our habits of life may represent on the one hand a danger of cultural flattening but on the other a powerful tool to intercept diversity.**





# COLLECTIVE INTELLIGENCE

Artificial Intelligence is also a collective intelligence, instrument of connection between different intellectual instances, we will see it in projects that envisage collaborative platforms and connections between different artistic practices.





# ARTIFICIAL INTELLIGENCE AGE



Big Data



Processing Power



---

New Age for Artificial Intelligence

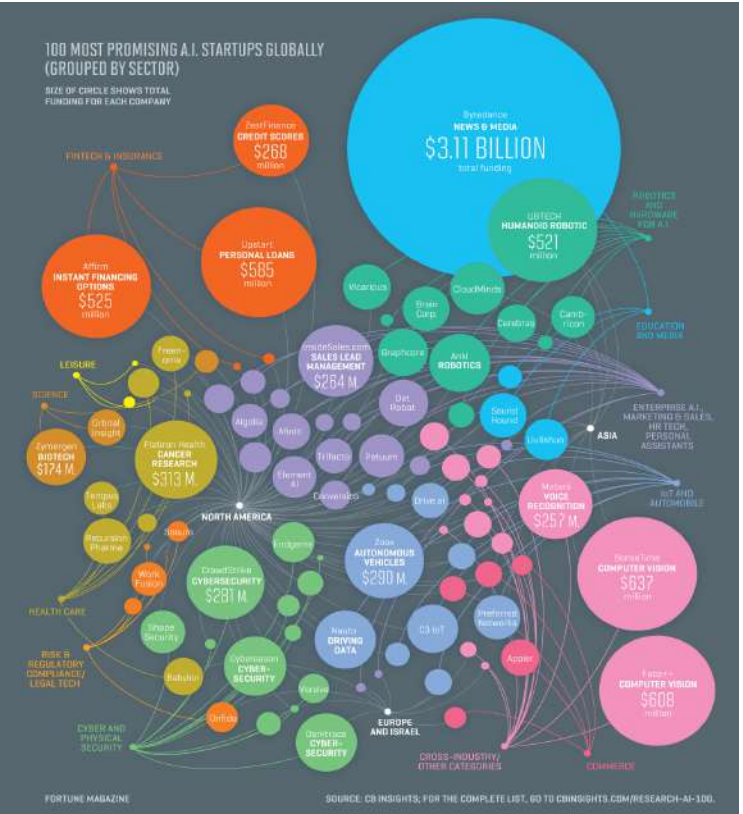


# ARTIFICIAL INTELLIGENCE AGE

AI Equity Funding since 2012

16+ Billion USD

2500 Deals



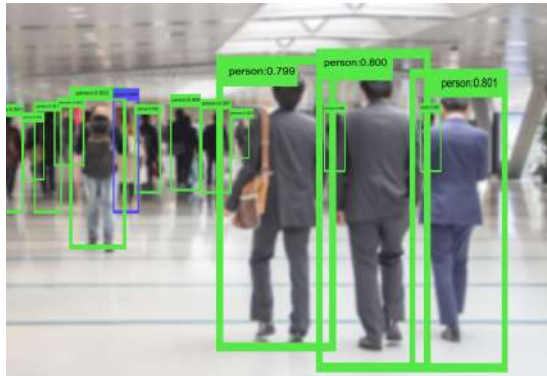
# ARTIFICIAL INTELLIGENCE AGE

## AI Technologies Main Areas

### NLP



### MACHINE LEARNING



### ROBOTICS



# PROGRESS IS COUPLED WITH NEW PROBLEMS TO SOLVE

The Telegraph

Home News Sport Business ALL SECTIONS

## Technology Intelligence

### Arizona residents attack self-driving cars

Follow

Olivia Rudgard, SAN FRANCISCO  
13 DECEMBER 2018 • 6:14PM

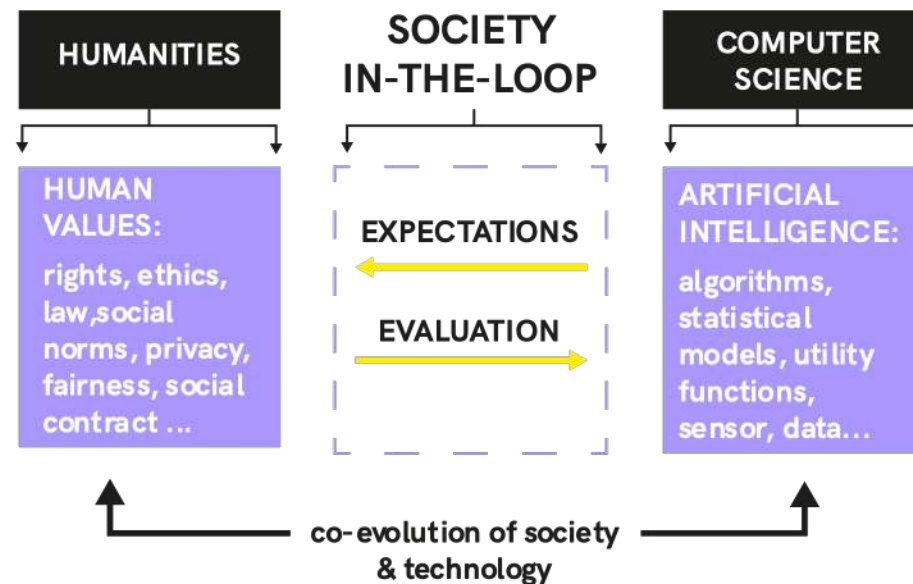
Arizona residents have attacked self-driving cars with rocks and slashed their tyres.

Police reports obtained by local media suggest that the Chrysler Pacifica cars run by Google sister company Waymo have become a target for some disgruntled locals, with 21 incidents recorded in the past two years.

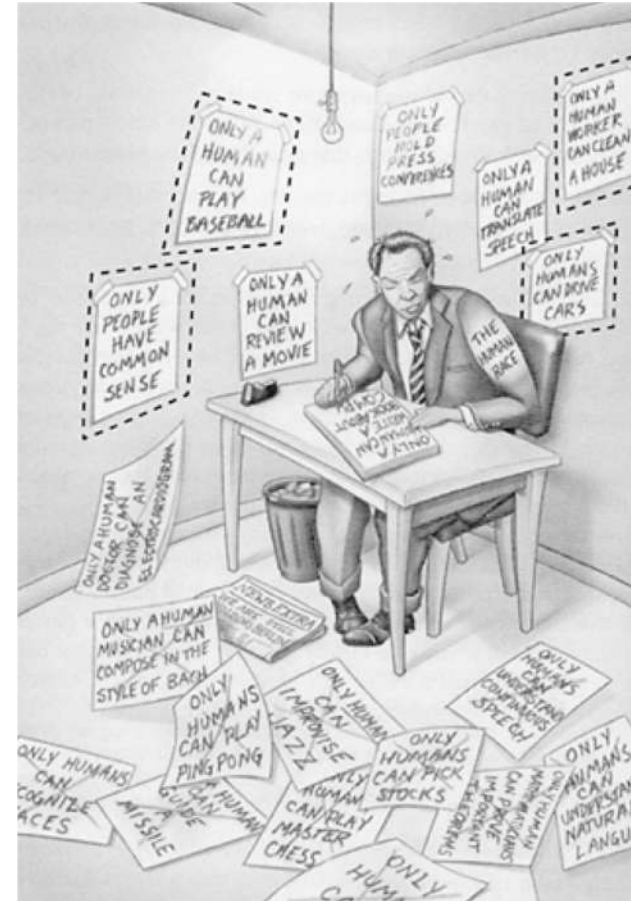


## TOWARDS A BETTER AI - SOCIETY IN THE LOOP

An important component of this picture is that both human values and AI are ongoing constant co-evolution. Thus, the evolution of technical capability can irreversibly alter what society considers acceptable – think of how privacy norms have changed because of the utility provided by smart phones and the Internet.



**PUTTING THE SOCIETY IN THE LOOP  
REQUIRES US TO BRIDGE THE GAP  
BETWEEN THE HUMANITIES AND  
COMPUTING**



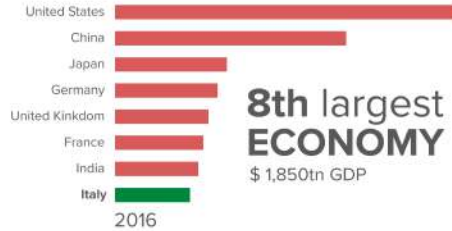


# ITALY CAN PLAY A GLOBAL KEY ROLE

## FACTS about ITALY

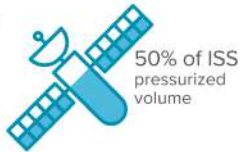


**4th studied LANGUAGE**  
after English, Spanish  
and Chinese



**TECHNOLOGY**  
Several leading technologies

**Aerospace**  
3rd country to send a satellite in orbit



**MANUFACTURING**  
5th largest trade surplus in manufactured goods  
€100 bn machinery export

90 Countries  
**MAJOR INFRASTRUCTURES**  
1000 Construction sites  
Industry world leader

**WORLD HERITAGE**  
Greatest number of UNESCO sites



**DESIGN**



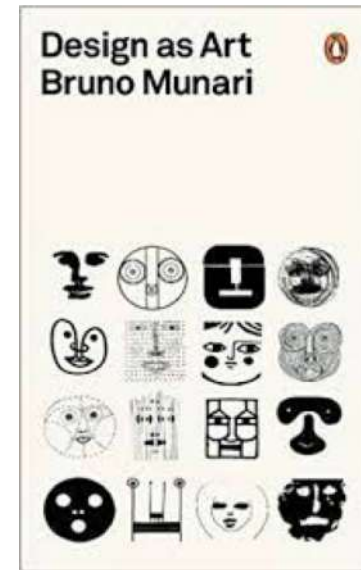


## FISHING FROM OUR HISTORY: BRUNO MUNARI



<<Non ci deve essere un'arte staccata dalla vita: cose belle da guardare e cose brutte da usare>>

<<*There must not be an art detached from life: beautiful things to look at and bad things to use*>>



## WHAT IS A «BEAUTIFUL» AI TECHNOLOGY?

- A pleasant object, e.g. Amazon Echo or Google Home
- A robot that behaves in an effective and empathetic way towards a human being
- A dialogue of a machine with a human being, respectful of the ethical and moral values of being in question
- A nice experience of using a predictive decision support session
- An effective yet beautiful wearable to wear, fashionable



Martial Raysse, America, America (1964)

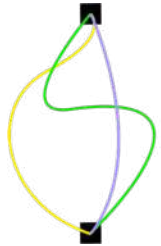


## ITALY BASED INITIATIVES TO SUPPORT AI PROGRESS

### Art Prizes and Exhibitions



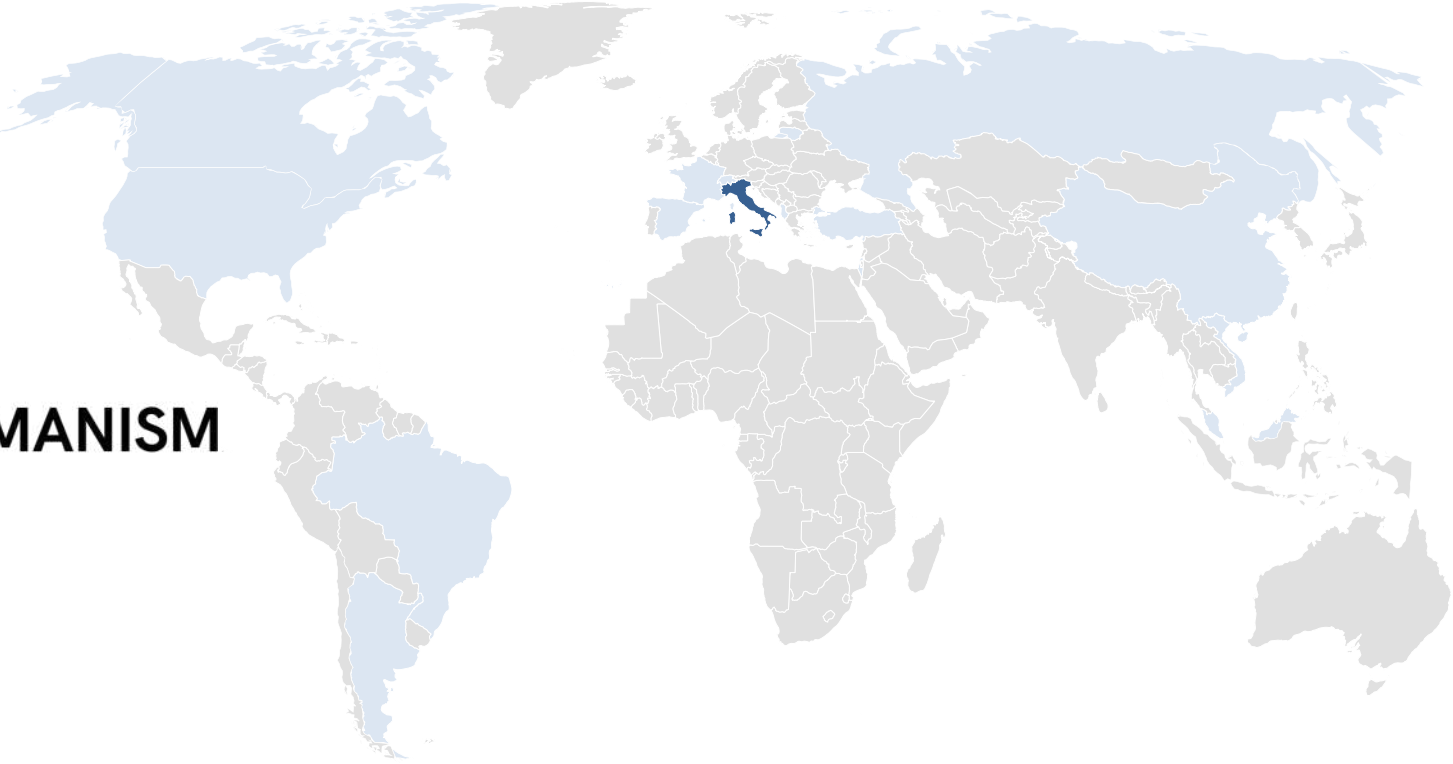
# ITALY BASED ART PRIZES AND EXIBITIONS



**RE:HUMANISM**

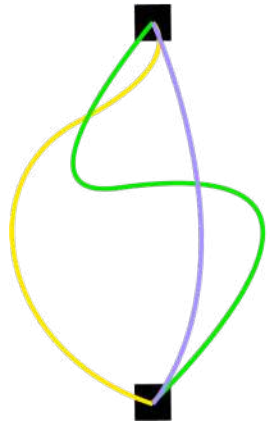
**ITALY 78%**

**WORLD 22%**



- ALBANIA **ARGENTINA** BOSNIA HERZEGOVINA **BRAZIL** CANADA **CHINA** FRANCE **GERMANY** GREAT  
BRITAIN **ISRAEL** ITALY **LITHUANIA** MALAYSIA **RUSSIA** SPAIN **SWITZERLAND** TURKEY **VIETNAM** USA

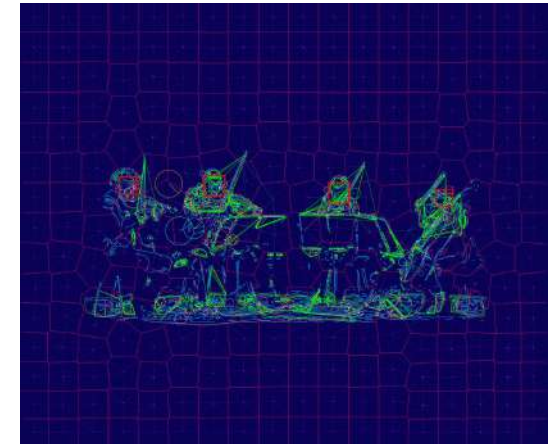




# RE:HUMANISM

## 2 TYPES OF PROPOSALS

- Artists working **with algorithms**
- Artists who analyze **cultural changes**



## THE EXHIBITION

AlbumArte is an independent and non-profit exhibition space in Rome, stands out for its international collaborations and for its talks and meetings on contemporary languages such as video art, painting, photography, sculpture, installation, performance, sound art, music concert, artistic residency, in supporting and promoting young artists and curators.





## ITALY BASED INITIATIVES TO SUPPORT AI PROGRESS

**Training, Startups Incubation  
and Acceleration**





# ITALY BASED INITIATIVES TO SUPPORT AI PROGRESS

## Funding Campaigns





INNOVATION MADE SIMPLE



[www.alanadvantage.com](http://www.alanadvantage.com)



[alanadvantage@alanadvantage.com](mailto:alanadvantage@alanadvantage.com)

