



柳东新区推介

Introduction to Liudong New District

柳州市柳东新区管委会 刘度量

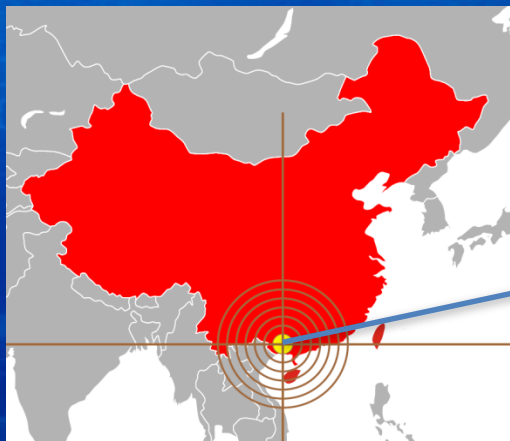
Administration Committee of Liudong New District, Liuzhou

Liu Duliang

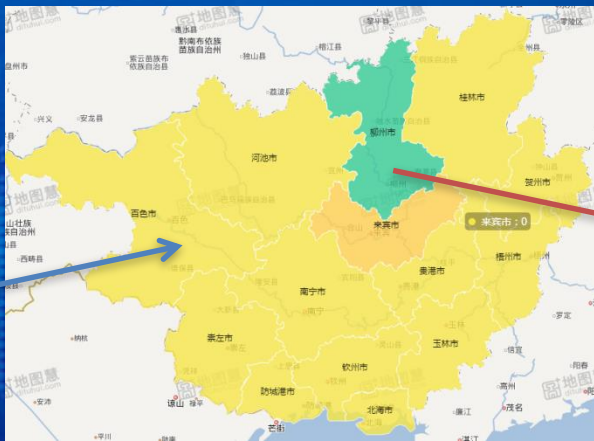
2019. 04. 05



柳东新区 Liudong New District

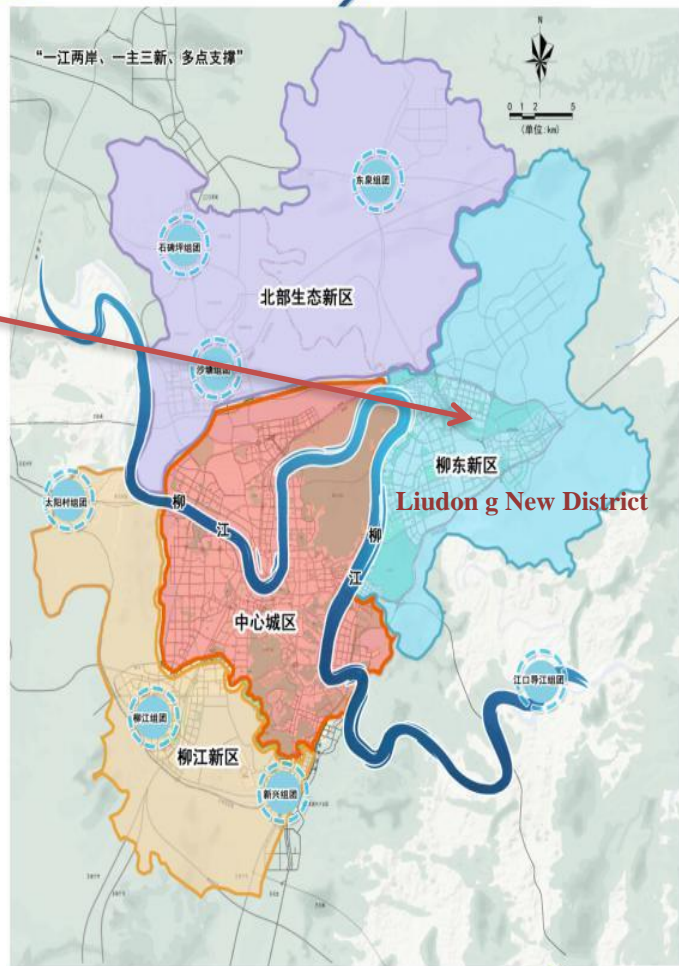


中国 · 广西Guangxi,
China



广西 · 柳州
Liuzhou, Guangxi

地理位置: 柳州市区东北部
Location: Northeast of Liuzhou City
成立时间: 2007年
Established: 2007
城市规划面积: 203平方公里
City planning area: 203 square kilometers
常住人口: 约35万人
Resident population: about 350,000 people



柳东新区 Liudong New District

“三位一体” 管理体制

“Three in One ” management system

柳东新区

Liudong New District

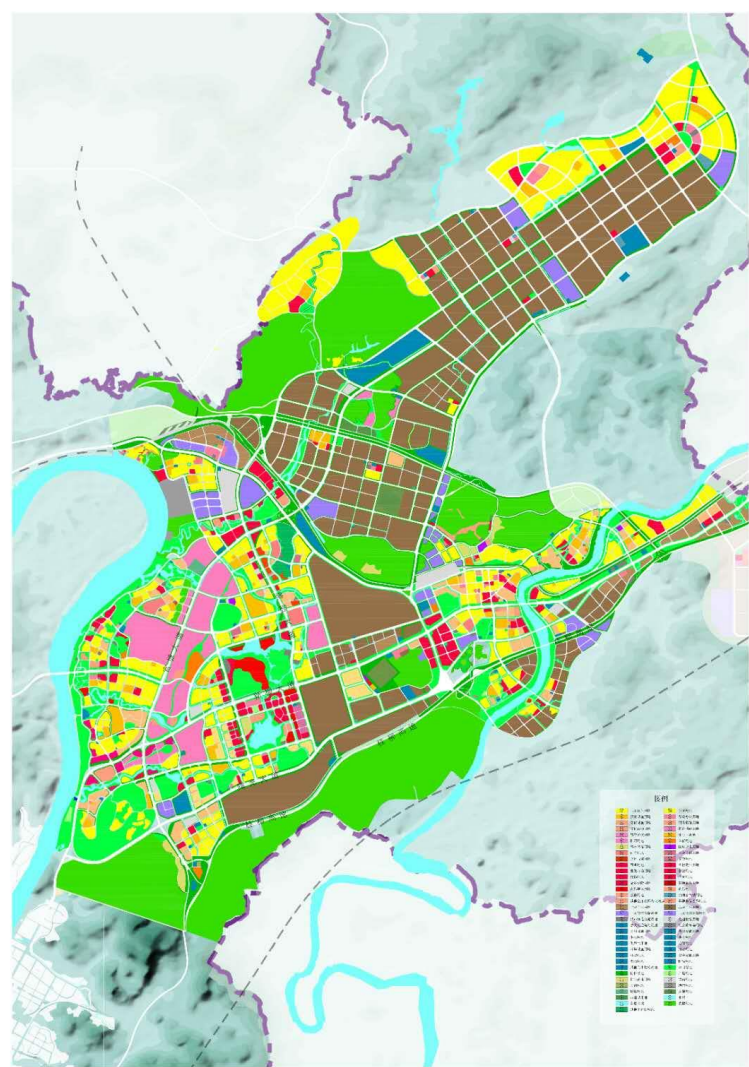
广西柳州汽车城

Guangxi Liuzhou Motor City

柳州国家高新区

Liuzhou National High-Tech Zone

(中国国家级高新区综合实力排名: 49/169, 位列广西第一)
(China's national high-tech zone comprehensive strength ranking: 49/169, ranked first in Guangxi)



柳东新区 Liudong New District

➤ 中欧（柳州）战略合作示范区

Strategic cooperation demonstration zone between China and Europe (liuzhou)

➤ 国家产城融合示范区

National Demonstration Zone of Industry Development and Urban Construction Integration

➤ 国家小微企业创业创新示范基地

National Demonstration Base of Small and Micro Enterprises Innovation and Start-ups

➤ 国家知识产权示范区

National IPR Demonstration Zone

➤ 中国“十佳最具投资竞争力园区”

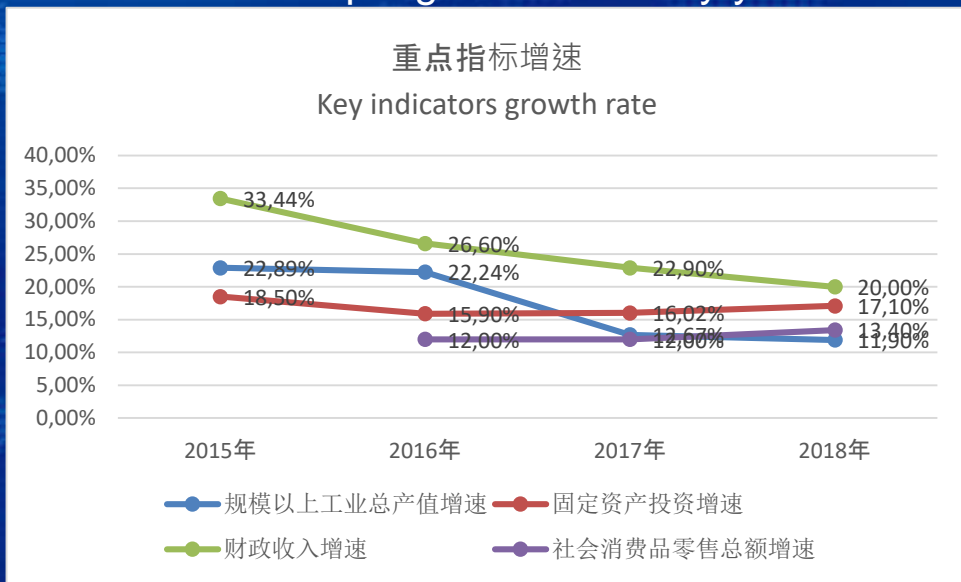
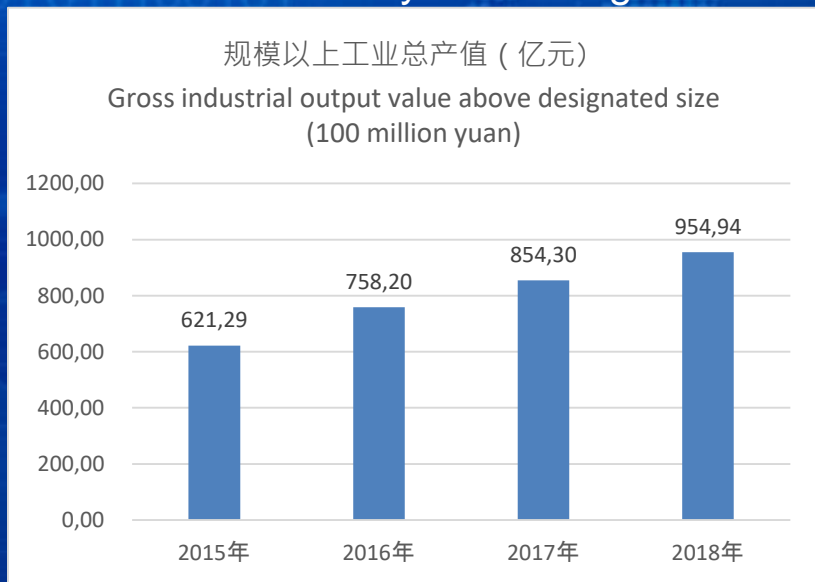
Top 10 most competitive investment parks in China



柳东新区 Liudong New District

柳东新区经济多年保持高速增长。

The economy of Liudong New District has maintained rapid growth for many years.



" 3+3+1 "

三大支柱产业
3 Pillar Industries

三大战新产业
3 Emerging Industries

现代生产性服务业
Producer Services

汽车
Automobile

智能轨道交通
Intelligent rail transIt

电子-光电
Electronic-Photoelectric

高端装备
High-end Equipment

新一代信息技术
Next generation information technology

新材料
New materials

研发设计、检测服务
数字服务、金融服务
物流服务、商务服务
R&D, design and testing services,
digital services, financial services
logistics service, business service

柳东新区汽车整车企业

Liudong New District's Automobile Vehicle Enterprise



新区拥有上汽通用五菱、东风柳汽等中国汽车行业龙头企业，形成年产120万辆汽车及100万台发动机的产能。
The new district has leading enterprises in China's auto industry, such as SAIC-GM-Wuling and Dongfeng Liuzhou, forming an annual production capacity of 1.2 million vehicles and 1 million engines.



柳东新区的汽车零部件企业 Auto Parts Company in Liudong



faurecia



福耀汽车玻璃
FUYAO AUTOMOTIVE GLASS



nexteer
AUTOMOTIVE

JAES



CAR EN3
卡耐新能源

TUOPU 拓普



市政基础设施配套Municipal infrastructure



市政基础设施配套Municipal infrastructure



千亩花海
Thousand-acre flower sea



卡乐星球

Vision Land



克里湾水乐园

Crete Bay Waterpark

市政基础设施配套 Municipal infrastructure



铁路交通 Railway

柳东新区内设有铁路货运站以及商品汽车铁路发运基地，运输服务快捷便利。

Liudong New District with the railway freight station and car railway goods delivery base, fast and convenient transport service.



水路交通 Waterway

柳东新区的官塘港区以及阳和港区，向东可直达粤港澳大湾区，向南可达中国东盟自贸区。

Through Guantang and Yanghe Ports in Liudong New District, ships can sail east to Guangdong-Hong Kong-Macao greater bay area and south to the ASEAN FTA.



高（快）速路交通 High (fast) road

柳东新区周边多条国家和地方高速过境，拥有国家公路枢纽柳东物流中心。

Liudong New District is surrounded by several national and local high-speed transit, with national highway hub liudong logistics center.



航空运输 Airplane

柳东新区距离柳州白莲机场约40分钟车程，距离桂林两江机场约80分钟车程。

It only takes 40 mins to Liuzhou Bailian Airport, and 80 mins to Guilin Liangjiang Airport.

政策 Policy

柳东新区实行特区式管理，行使各项市级审批权限。新区对标对表国际国内先进地区建立投资合作政策体系，全面打造法治化、国际化、便利化的营商环境。

Liudong New District implements SAR-style management and exercises various city-level approval authority. The new district will establish an investment cooperation policy system with reference to international and domestic advanced regions, and comprehensively create business environment with rule of law, internationalization and convenience.



政策 Policy

优质的营商环境，完善的人才政策，不断吸引高端人才扎根柳东，新区现有博士人才148人，硕士人才2187人，专业技术人才25770人。

The high-quality business environment and perfect talent policy continue to attract high-end talents to take root in Liudong. The new district has 148 doctoral talents, 2187 masters and 25,770 professional and technical personnel.

柳州市柳东新区

管理委员会文件

柳东规〔2018〕13号

柳东新区管理委员会关于印发《柳东新区促进
新能源产业发展暂行办法》的通知

柳州市柳东新区

管理委员会文件

柳东规〔2018〕14号

柳东新区管理委员会关于印发《柳东新区
促进新一代信息技术产业发展暂行
办法》的通知

柳州市柳东新区

管理委员会文件

柳东规〔2018〕18号

柳东新区管理委员会关于印发《柳东新区柔性
引才管理办法实施细则》的通知

政策 Policy

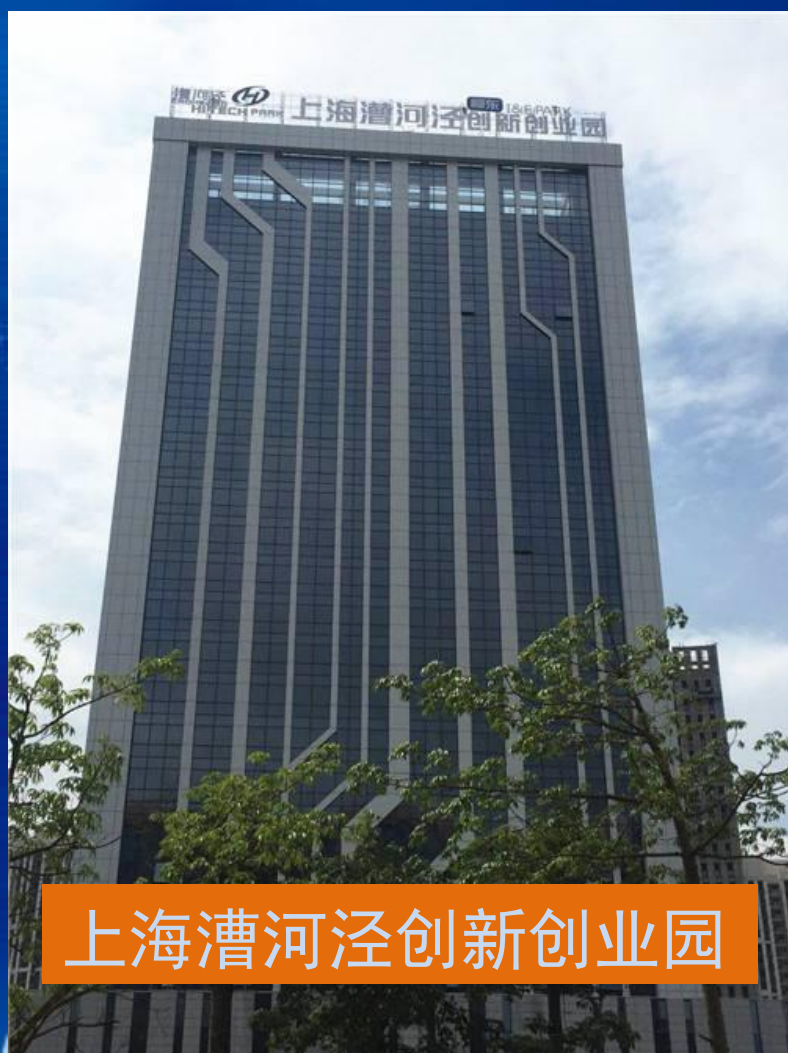


柳东新区拥有总占地面积达10平方公里、中国西南最大的职业教育园区，每年为企业培养输送各类人才2.7万人。

LiuDong New district covers an area of 10 square kilometers, southwest China's largest professional education park, transport all kinds of talents for

创新 Innovation

- ◆ 国家级科技企业孵化器
National High-tech Business Incubator
- ◆ 全国小型微型企业创业创新示范基地
National Demonstration Base of Small and Micro Enterprises Innovation and Start-ups
- ◆ 创新型特色园区 Characteristic Innovation Park
- ◆ 国家级知识产权试点园区
National IPR Trial Park
- ◆ 广西知识产权交易中心柳州工作站
Guangxi IPR Trading Center (Liuszhou Station)



985大学产学研机构

Industry-University-Research Institution



清华大学

苏州汽车研究院技术转移中心



华中科技大学

HUZHONG UNIVERSITY OF SCIENCE AND TECHNOLOGY



上海交通大学

SHANGHAI JIAO TONG UNIVERSITY

机械与动力工程学院

SCHOOL OF MECHANICAL ENGINEERING



华南理工大学

South China University of Technology



中南大学

CENTRAL SOUTH UNIVERSITY



湖南大学

HUNAN UNIVERSITY



四川大学

SICHUAN UNIVERSITY

合作领域Area of cooperation

1、汽车产业领域 Automotive industry

- 打造新能源汽车、智能汽车生产研发高地。
- Create high-tech cars and smart cars production and development highlands.
- 依托新区智能网联汽车示范区，深入开发智能化应用场景，推动无人驾驶和共享汽车的研究应用。
- Relying on new district's intelligent network vehicle demonstration zone, develop intelligent application scenarios and promote research and application of driverless and shared vehicles.



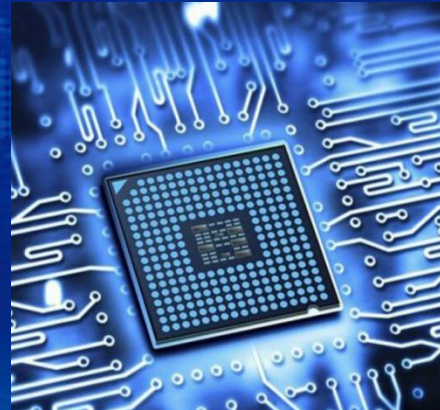
合作领域Area of cooperation

2、智能制造&新材料领域

Intelligent manufacturing & new materials

期待在智能制造、高端装备制造、电子信息、新材料、节能环保等领域共同构建产业生态圈。

Looking forward to building an industrial ecosystem in areas such as smart manufacturing, high-end equipment manufacturing, electronic information, new materials, energy conservation and environmental protection.

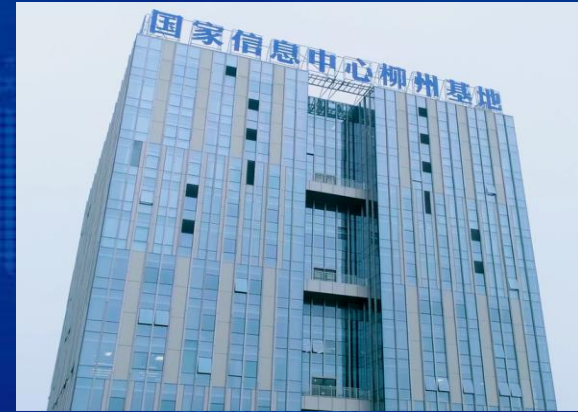


合作领域Area of cooperation

3、科技创新领域 Science and technology innovation field

共建国际化的“产学研用”
平台。

Build an international
“production, study and
research” platform.



101110100011101011100101
100011101011100101
110100011101011100101
101011100101

谢谢大家！

Thank you!

